

# PK 16001-K

High Performance

**PALFINGER** CRANE



**KTL**  
protected

**Paltronic  
50**  
controlled

**RRC**<sup>\*)</sup>  
Radio Remote Control  
operated

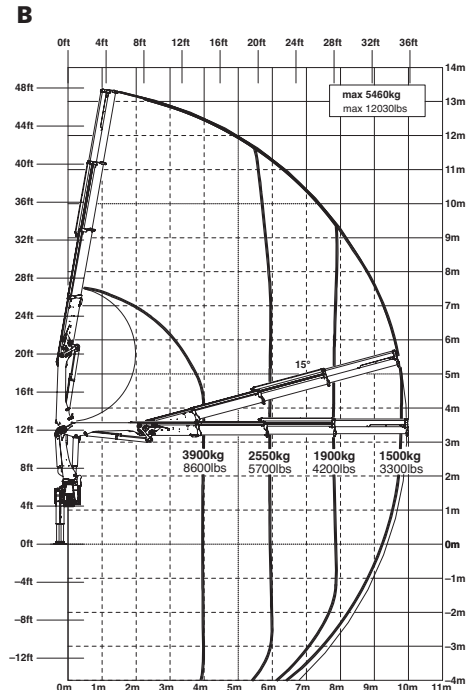
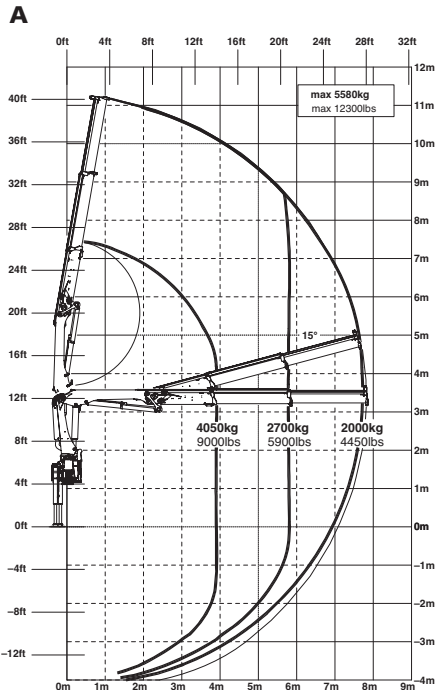
**ISC**<sup>\*)</sup>  
Integrated Stability Control  
monitored

## Compactness and efficiency

Its short, weight-optimized boom system gives the PK 16001 K an ideal power-weight ratio. The hexagonal tubes, manufactured in a precise and fully automated production line, provide for utmost precision even on tough jobs. Functional design and advanced electronics guarantee maximum comfort and safety.

Both light-weight  
and powerful

**PK 16001 K High Performance**



**Technical Specifications (EN 12999 H1-B3)**

Max. lifting moment	16.2 mt/158.9 kNm	117160 ft.lbs
Max. lifting capacity	5460 kg/53.6 kN	12040 lbs
Max. hydraulic outreach	10.0 m	32' 10"
Max. manual outreach	14.2 m	46' 7"
Slewing angle	420°	
Slewing torque	2.0 mt/19.6 kNm	14470 ft.lbs

Stabilizer spread	std. 5.0 m/16' 5"	max. 6.6 m/21' 8"
Fitting space required (std.)	0.80 m	2' 7"
Width folded	2.50 m	8' 2"
Max. operating pressure	320 bar	4640 psi
Recommended pump capacity	from 40 l/min to 60 l/min	10.6 US gal./min 15.9 US gal./min
Dead weight (std.)	1620 kg	3570 lbs

